

June 7, 2013

Welcome to MRSI Solutions Newsletter. This periodic newsletter provides information on our latest happenings and product updates.

Many thanks to our loyal customers for their continued interest in our products.

In This Issue

[The Importance of Proper Lighting](#)

[Applications Corner](#)

[Assembly Solutions Update](#)

SEMICON[®]
West2013

10TH ANNIVERSARY
IWLPC
INTERNATIONAL WAFER-LEVEL
PACKAGING CONFERENCE™



ECTC 2013

MRSI Solutions

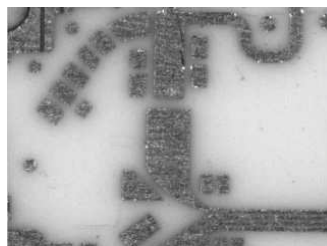
For Dispense and Assembly

Dispense and Assembly Solutions Update

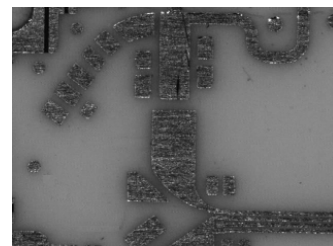
The Importance of Proper Lighting

Lighting is an important component of any vision recognition system. When it comes to lighting it is not a case of "one size fits all". The proper illumination of a given surface type requires flexibility in lighting. Our family of die bonders and dispense systems include programmable intensity ring and collimated lighting for each camera. Optimal light settings are programmable for each die and alignment.

The ring lights include multi-color lighting to optimally vision process a wide range of materials. Red, green and blue programmable lighting is more robust for processing challenging alignment surfaces, such as gold on alumina. The following pictures illustrate the point. The picture on the left shows the video image of a gold trace on white ceramic illuminated with RGB lighting. The picture on the right shows the same image using a single wavelength light source. Seeing these pictures it easy to understand why the MRSI systems achieve much better vision processing results than competitive system using a single color light source.



Tri-Color Light Image



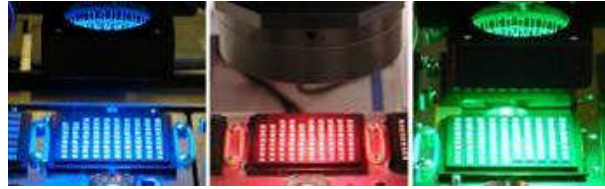
Single-Color Light Image

Tri-color (red, green, and blue) stadium lighting is combined with programmable lighting intensity to enable the processing of the widest range of die, substrates and packages. Each color's intensity is set independently, thus allowing tuning of the illumination wavelength for vision processing. This means the user can maximize the contrast in the image by optimizing the mix of colors for the package or substrate and choose a different combination for the die. This dramatically increases the capability of the vision recognition. The tri-color programmable intensity lighting solution provides robust image lighting for even difficult images such as thin gold traces on white ceramic

substrates and RF package headers.

Upcoming Events:

Follow Newport



Applications Corner

Newport's MRSI Workcell software is always being enhanced with new software features. Some of our customers run programs with a large number of placements. In fact one recent customer had the need to place more than 800 components in a single program. To ensure these very large programs load and edit quickly, we have made some changes to how these programs are stored. By enabling the 'binary mode' option, substrate XML programs are converted to a binary format. Switching between large programs is done in seconds. Re-teaching a few placements in the middle of a very large program is also quick and easy.

Contact Newport for more details.

Assembly Solutions Update



Waffle Pack Sector Plate Covers

The sector plate cover provides the means to cover the open waffle pack and Gel-Paks on a sector plate for storage and identification on the system. The sector plate cover has two tiers. The top of the sector plate cover holds the waffle pack and Gel-Pak lids so the user can reference the die part number information. It is made of clear static dissipative material for ESD control.



Waffle Pack Sector Plate Shuttle

A three sector plate shuttle is available to provide additional waffle pack capacity. Sector plates are attached to a linear shuttle mechanism. When used in conjunction with a rear sector plate the MRSI-705 can accommodate ninety six (96) 2" x 2" waffle pack/Gel-Paks. The MRSI-M5 can accommodate seventy two (72) 2" x 2" waffle packs/Gel-Paks.

MRSI - M3 Assembly Work Cell



MRSI - M5 Assembly Work Cell



MRSI-705 Assembly Work Cell



MRSI-175Ag Epoxy Dispenser



Need More Information, Please Contact Dan Crowley at:
+1.978.667.9449
sales@ma.newport.com



Copyright © 2013. All Rights Reserved.

[Forward this email](#)



This email was sent to susan.vlasak@newport.com by dan.crowley@newport.com | [Update Profile/Email Address](#) | Instant removal with [SafeUnsubscribe™](#) | [Privacy Policy](#).

Newport Corporation | 101 Billerica Ave, Bldg 3 | N. Billerica | MA | 01862