



August 1, 2013

Welcome to MRSI Solutions Newsletter. This periodic newsletter provides information on our latest happenings and product updates.

Many thanks to our loyal customers for their continued interest in our products.

**In This Issue**

- [Real Time Video](#)
- [Application Corner](#)
- [Thanks for Visiting Newport at Semicon West](#)



**Upcoming Events:**

**Follow Newport**



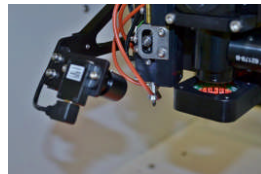
## MRSI Solutions

### For Dispense and Assembly

#### Real Time Video Provides Process Monitoring

**Real Time Video Provides Process Monitoring for Dispense and Assembly:**

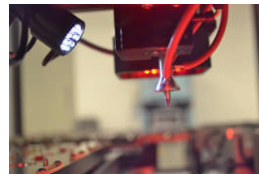
Real time video is available to monitor the dispense and assembly process on the Newport MRSI family of Dispense and Die Bonders. This is an excellent tool for process development providing the engineer with a unique view of the assembly process. Improvements in available LED lighting, camera form factors and resolution as well as monitors means the quality of the image displayed is excellent. Customers, particularly those configured to view their "unmanned factory" remotely enjoy the benefits.



**Real Time Video**

This option is available to monitor the system processes including:

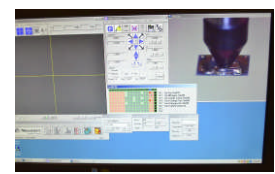
- Pick and Place Tip
- Dispense Tip #1
- Dispense Tip #2



**Camera and Lighting**

LED lighting, high-resolution camera and optics provide excellent image quality.

The video image can be used as a process development and monitoring tool.

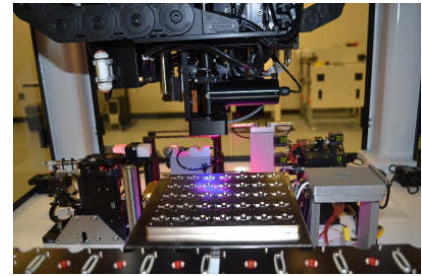
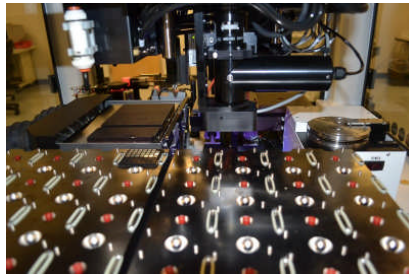


**Large Monitor**

Customers can choose between separate monitors for video display or one large monitor that displays the system's software Graphical User Interface (GUI) and size selectable live video windows of the pick and place tip and/ or dispense tips.

**Applications Corner**

Newport's MRSI-705 Assembly Work Cell continues to set new industry standards for ± 8 microns ultra-precise, high-speed component assembly. A solid granite platform supports the placement head from above, so that no mechanisms are cantilevered. The large work area allows us to configure the system for your specific application.



**Large Configurable Work Area**

**for Application Specific Needs**

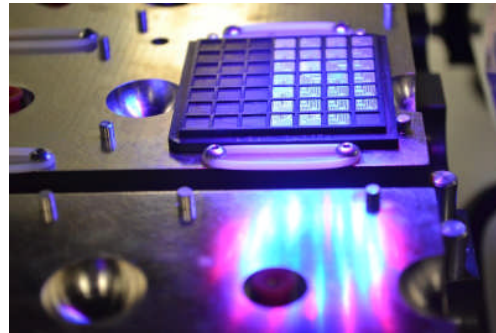
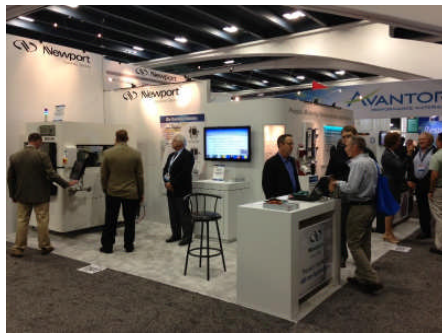
- Waffle Packs (up to 96)
- Gel-Paks
- Wafer Feeding
- Tape and Reel Feeding
- Eutectic (Batch mode and In-line)
- Epoxy Well
- Dual Dispensing

- Flux Well
- Chip Flip Mechanism
- Upward Facing Vision Camera
- Tri-Color Lighting
- Automatic Material Handling
- UV and Thermal Curing
- Automatic Tip Changing

**Assembly Solutions Update - Thanks for Making Semicon West 2013 Such a Success**

Thanks for Visiting the Newport Booth at Semicon West

The MRSI-M5, Ultra-Precision Die Bonder was displayed at the Newport Corporation booth. The traffic at the booth certainly kept us busy. It was great to see our old and new customers alike. We had the opportunity to demonstrate the system and discuss your applications. This years discussions centered around our traditional market strengths such as Microwave Modules, Photonics Packaging and complex MCM, as well as some of the newer applications such as Active Optical Cables (AOC) and 2.5/3D Thermo Compression Bonding. Some of us will be heading over to Semicon Taiwan and then onwards to IMAPS in Orlando, We hope to see you there! Click on the show logo link for more details.



**MRSI - M3**  
**Assembly Work Cell**



**MRSI - M5**  
**Assembly Work Cell**



**MRSI-705**  
**Assembly Work Cell**



**MRSI-175Ag**  
**Epoxy Dispenser**



Need More Information, Please Contact Dan Crowley at:

+1.978.667.9449

[sales@ma.newport.com](mailto:sales@ma.newport.com)



Copyright © 2013. All Rights Reserved.

[Forward this email](#)



This email was sent to susan.vlasak@newport.com by [dan.crowley@newport.com](mailto:dan.crowley@newport.com) | [Update Profile/Email Address](#) | Instant removal with [SafeUnsubscribe™](#) | [Privacy Policy](#).

Newport Corporation | 101 Billerica Ave, Bldg 3 | N. Billerica | MA | 01862